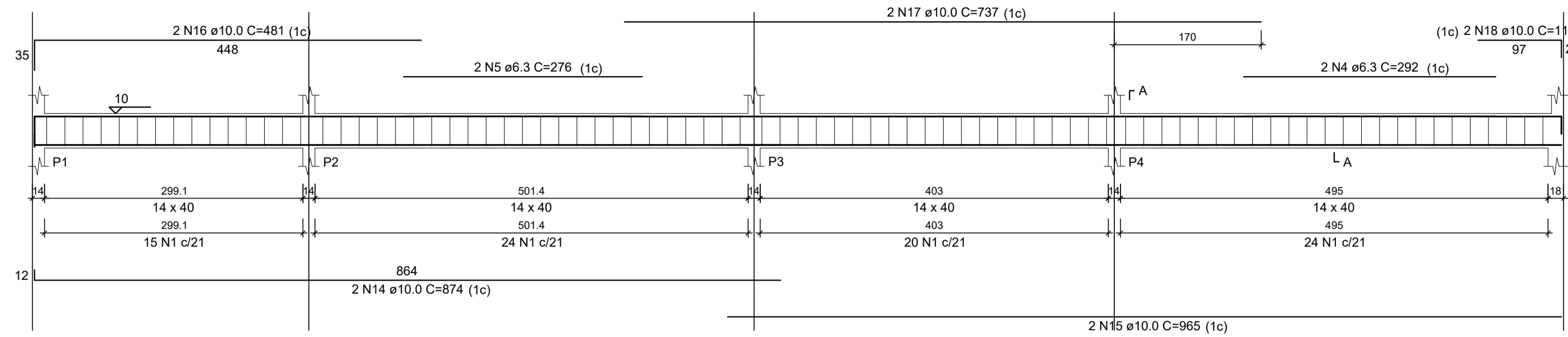


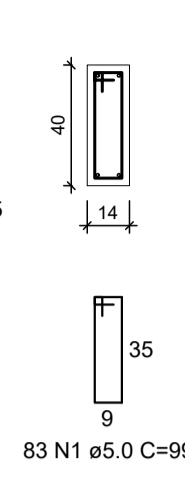
V1

ESC: 1:50



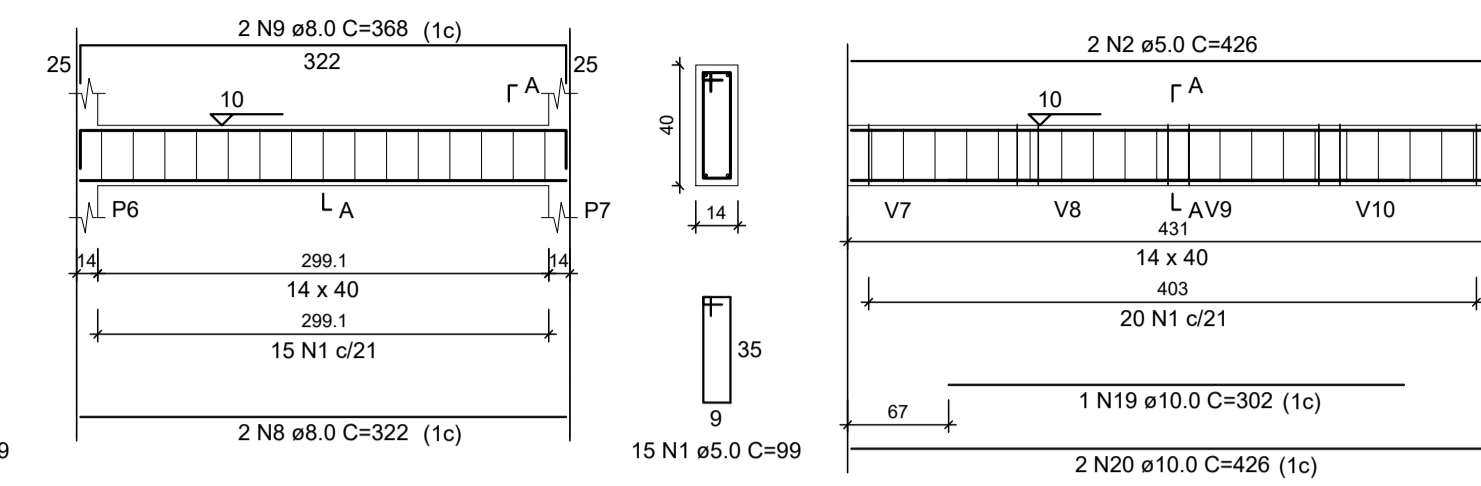
SEÇÃO A-A

ESC: 1:25



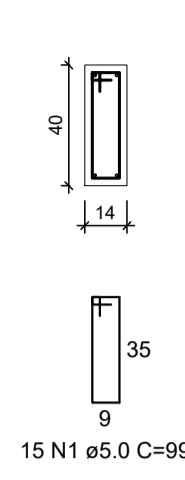
V2

ESC: 1:50



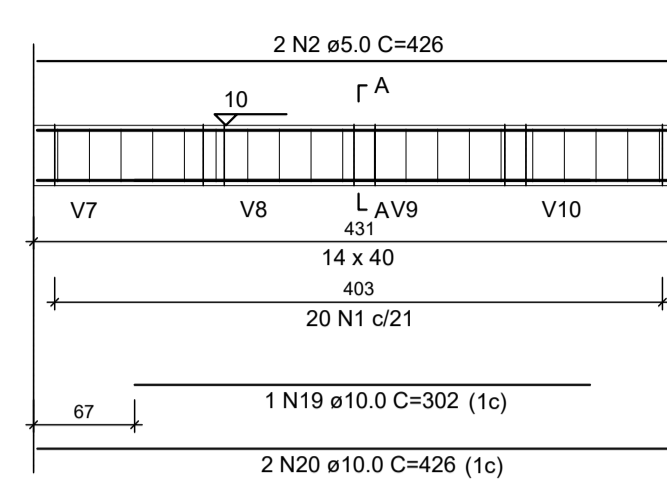
SEÇÃO A-A

ESC: 1:25



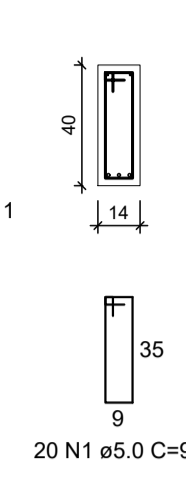
V3

ESC: 1:50



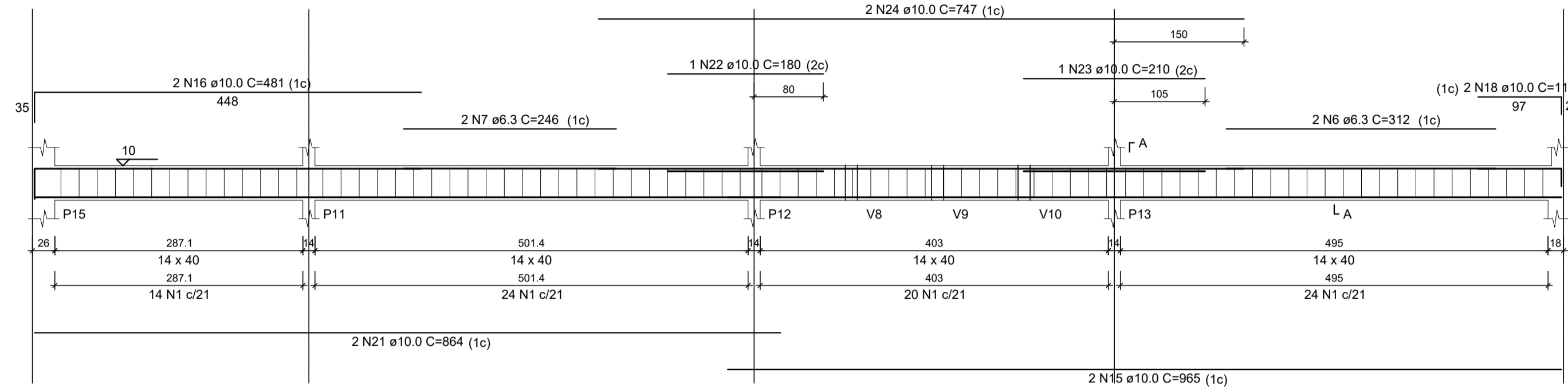
SEÇÃO A-A

ESC: 1:25



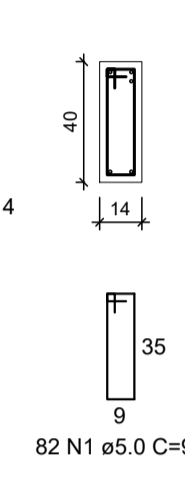
V4

ESC: 1:50



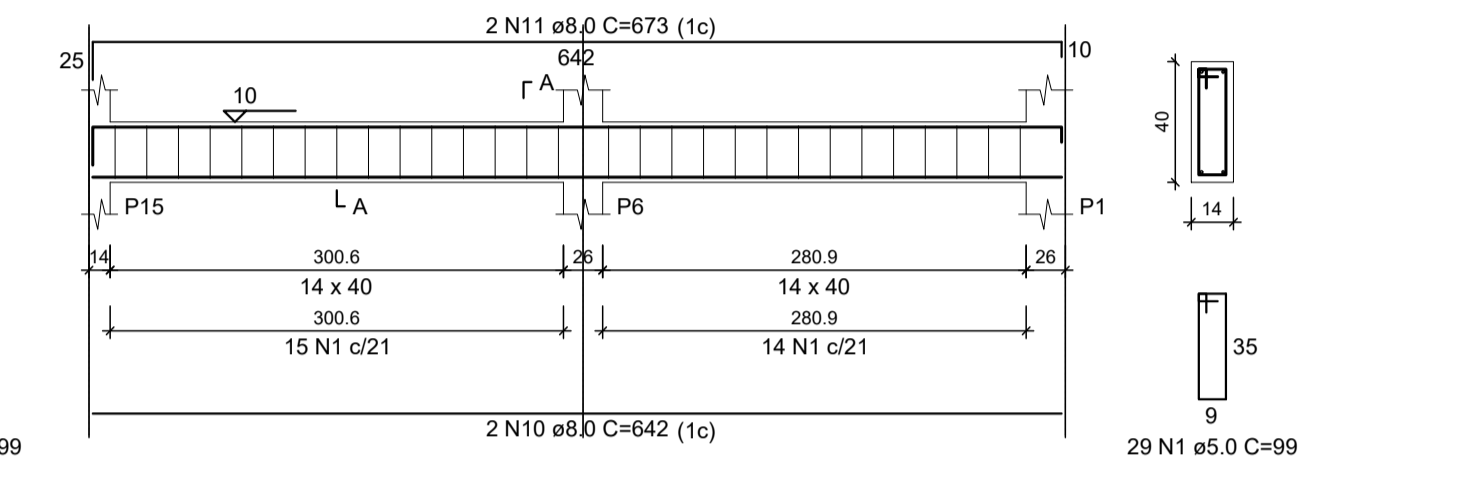
SEÇÃO A-A

ESC: 1:25



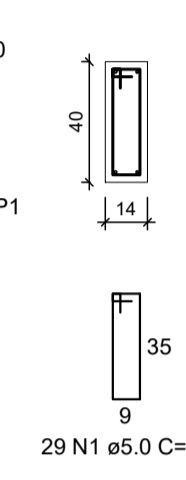
V5

ESC: 1:50



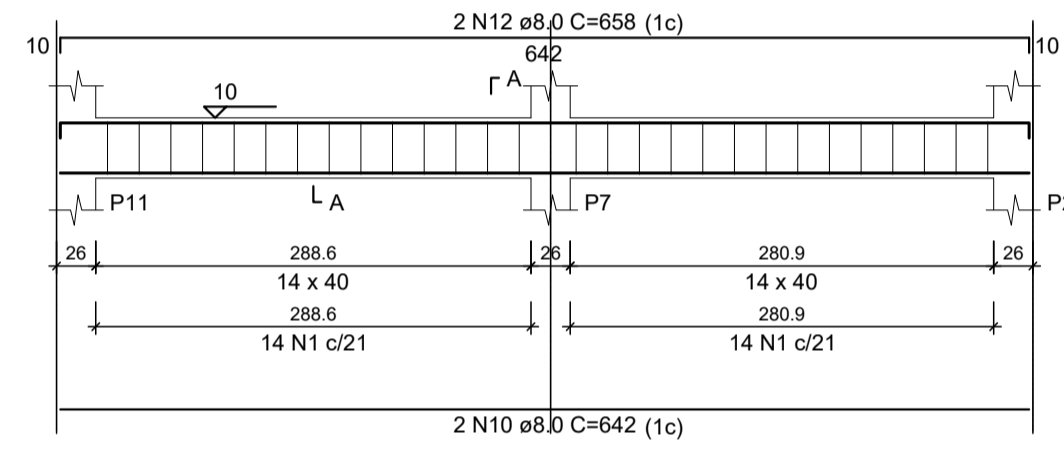
SEÇÃO A-A

ESC: 1:25



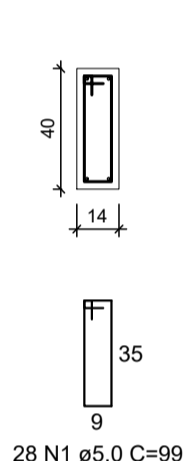
V6

ESC: 1:50



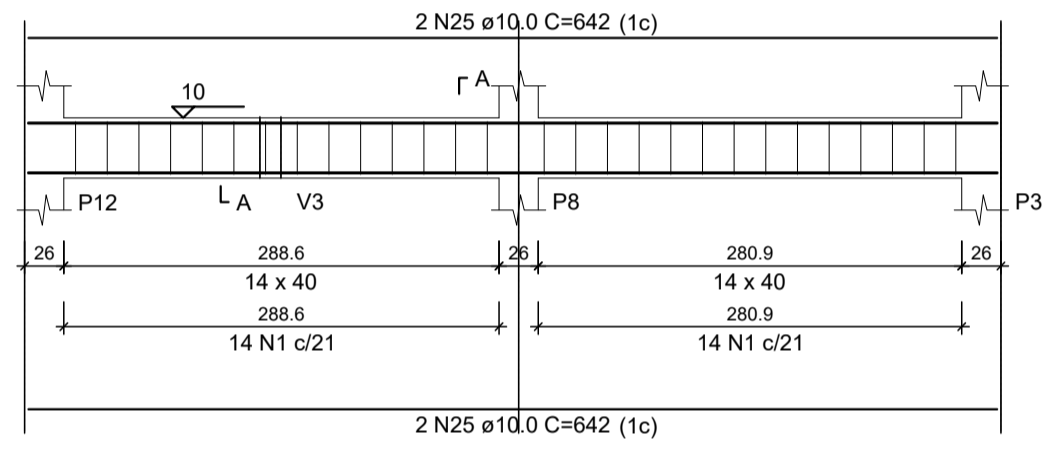
SEÇÃO A-A

ESC: 1:25



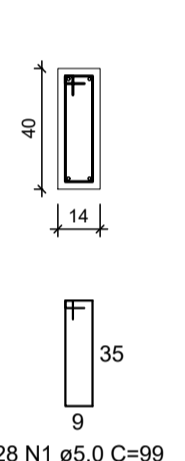
V7

ESC: 1:50



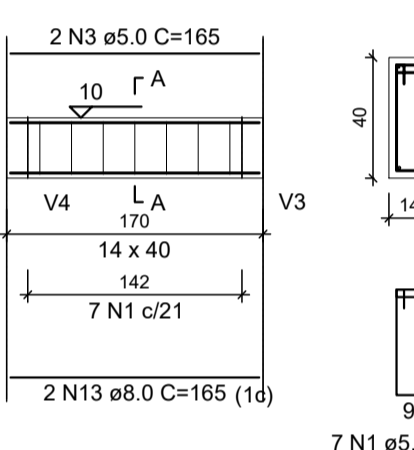
SEÇÃO A-A

ESC: 1:25



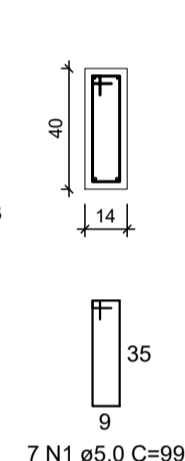
V8

ESC: 1:50



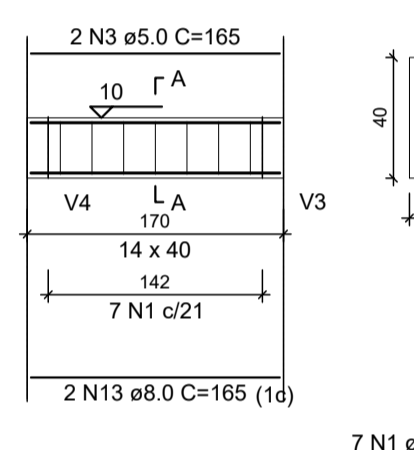
SEÇÃO A-A

ESC: 1:25



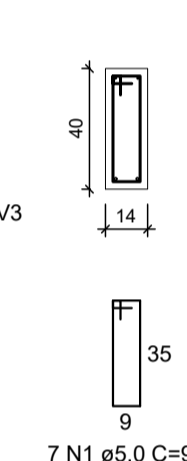
V9

ESC: 1:50



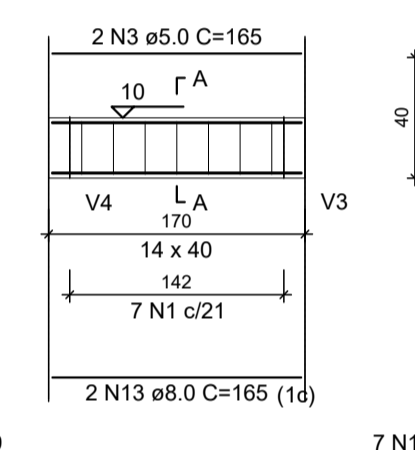
SEÇÃO A-A

ESC: 1:25



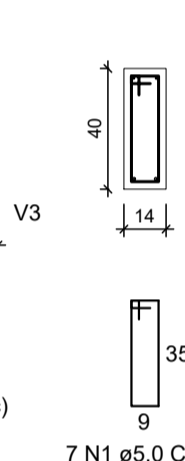
V10

ESC: 1:50



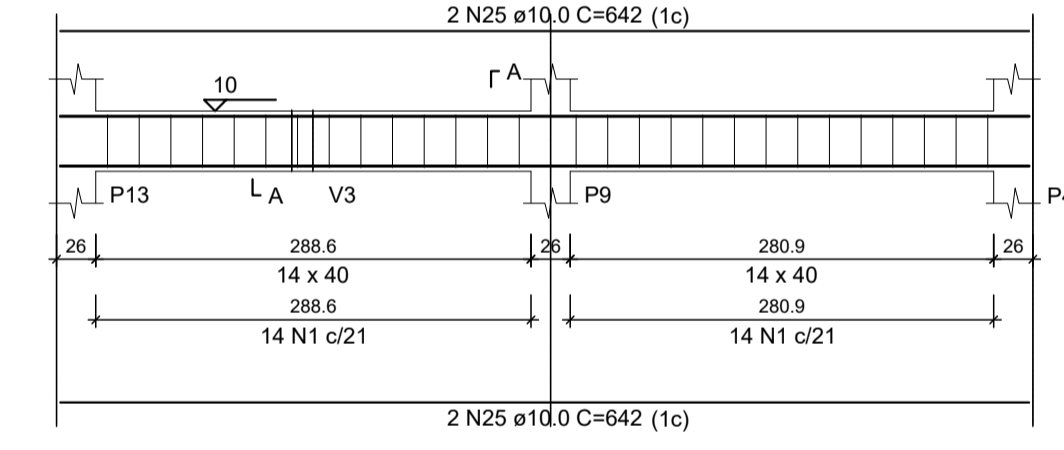
SEÇÃO A-A

ESC: 1:25



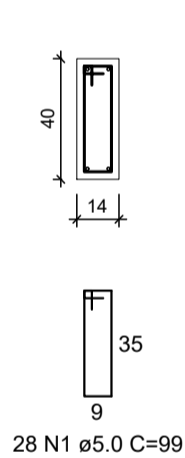
V11

ESC: 1:50



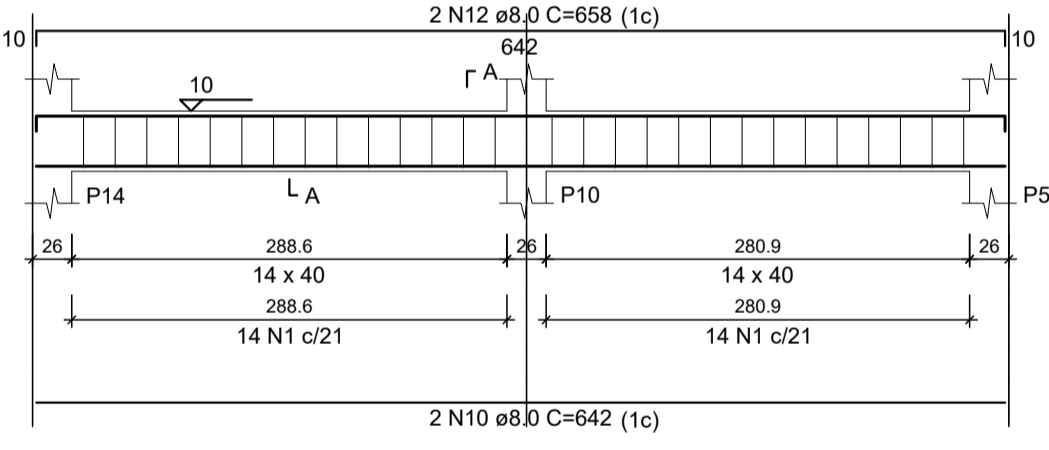
SEÇÃO A-A

ESC: 1:25



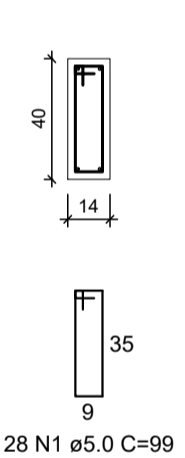
V12

ESC: 1:50



SEÇÃO A-A

ESC: 1:25



RESUMO DO AÇO

AÇO	DIAM (mm)	C.TOTAL (m)	PESO + 5% (kg)
CA50	6.3	22.5	5.8
	8.0	102	42.3
	10.0	193.7	125.4
CA60	5.0	376.8	61
PESO TOTAL (kg)			
CA50	173.4		
CA60	61		

Volume de concreto (C-25) = 4.51 m³
Área de forma = 75.67 m²

PROJETO ESTRUTURAL

Escritório:
Arquitetura & Engenharia

Contato: 48-99106886
48-999778312

PROPRIETÁRIO: Prefeitura Municipal de Sangão
LOCAL: Endereço: Rua Porfírio João Pereira Morro Grande-Sangão/SC

RESP. TÉCN.: Dayane Pereira Luiz
Engenheira Civil CREA-SC 148202-5

DESENHO: Paula dos Anjos
Arquiteta e Urbanista CAU/SC 196413-5

DISCRIMINAÇÃO: PROJETO ESTRUTURAL ADENDO DIRETORIA -DETALHAMENTO DAS VIGAS DO BALDRAME

ÁREA: 305,73 m²
DATA: DEZEMBRO/2018
ESCALA: Indicada